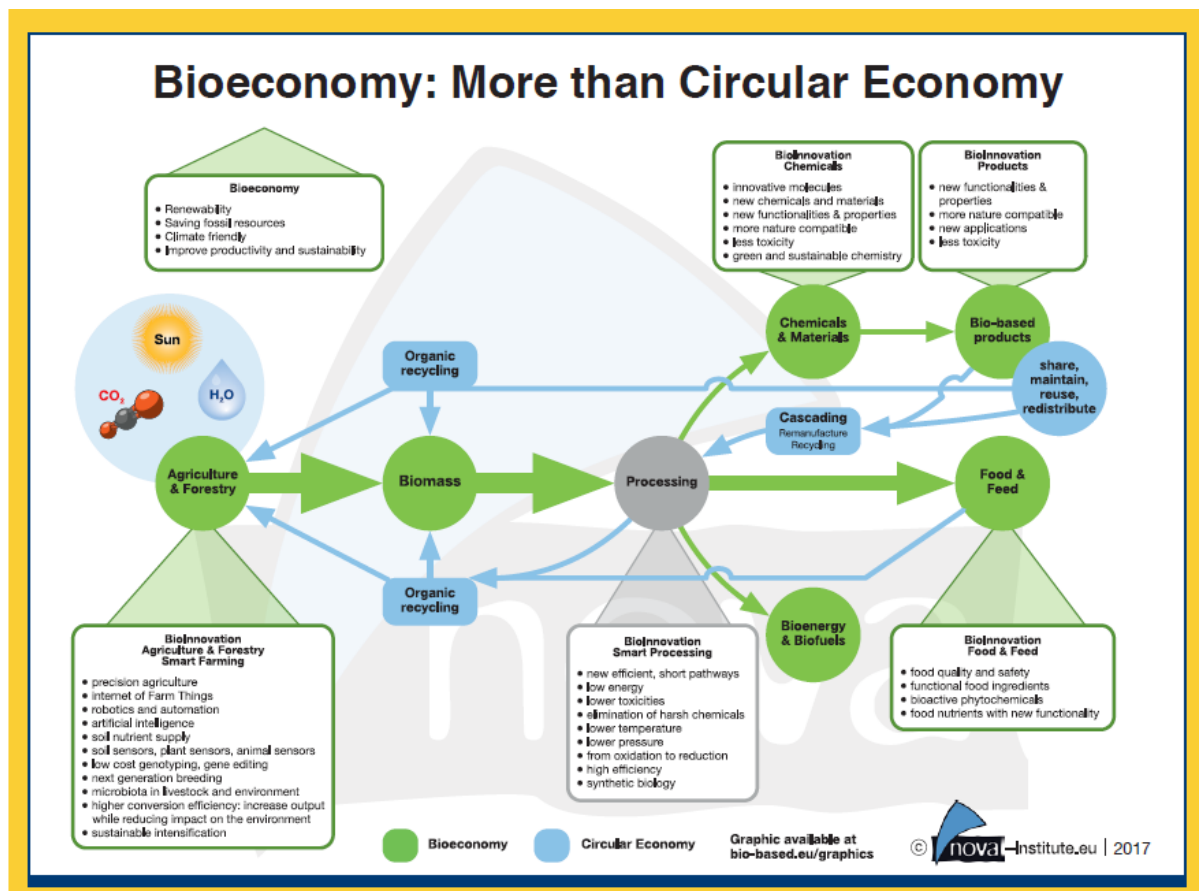


Ideas to further develop this graph:

- New title: “Circular Bioeconomy”
- The step “Agriculture” and “Processing” perhaps should share a step called “Residues” and this step should be connected with “Bioenergy & Biofuels” in order to indicate that energy and biofuel production should be at the end of a biomass using cascade.
- Introduce CO₂-flow from processing (e.g from biogas purification, fermentation processes, etc...)
- Introduce new step: “Power-to-Gas” and connect with the CO₂-flow
- Introduce new step: “chemical production” and connect with CO₂-flow
- Keep different colours for Bioeconomy and Circular Economy, use a third colour for the CO₂-flows and the uptaking steps – call it “Carbon Cycle Economy” in the legend illustration?



SAMBA analysis
Socio- and Multicriteria Model for reducing barriers analysis

MODULE1
Starting point: product / technology / process / business model / service / vision / project

